

www.noblelift.com

We promise, We deliver

NOBLELIFT NORTH AMERICA CORP

Add:2461 S Wolf Road
Des Plaines, IL 60018
Tel:001-847-595-7100
Fax:001-847-595-7200
Email:sales@nobleliftna.com
Http:www.nobleliftna.com

NOBLELIFT EUROPE GMBH

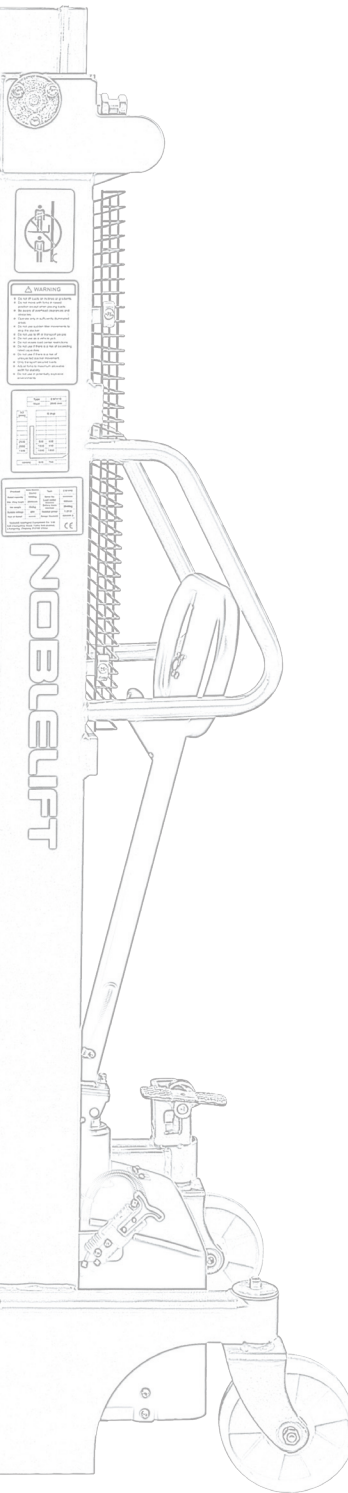
Add:Borsigstrasse
9-93082 Barbing Germany
Tel:+49 9401 607930
Fax:+49 9401 6079329
Email:mail@noblelifteurope.com
Http:www.noblelifteurope.com

NOBLELIFT RUSSIA

ООО «Ноблелифт Рус»
194292, Санкт-Петербург
Домостроительная ул. 4А офис 301
Тел.: +7-800-700-28-97
Email: sales@noblelift.com.ru
Http: www.noblelift.com.ru

NOBLELIFT CHINA

Add:528 Changzhou Road,Taihu Sub-district,
Changxing, Zhejiang 313100 China
Tel:86-572-6210817 6210311
Fax:86-572-6210777 6128612
Email:info@noblelift.com
Http:www.noblelift.com www.noblelift.cn



Official website



Our Wechat

NOBLELIFT
Material Handling



ESFH10
Easy Stacker

Time to get rid of the manual pumping stacker!

NEW *Noblelift Products*
ARRIVAL

NOBLELIFT INTELLIGENT EQUIPMENT CO., LTD

New ESFH manual stacker with powered lifting function



What is the most annoying in operation of manual stacker? Of course, this is endless pumping to achieve required lifting height, not only time consuming, but also something required a lot of efforts. With new ESFH10 this procedure is as simple as possible – just press the lifting button.

The semi-electric stacker ESFH is a powered solution made on a basis of traditional manual stacker for simplification of manual loading and unloading operations where the frequency of these operations is not high enough for use of fully powered or traditional semi-electric solutions. The truck is designed to be used in more occasional operations, rather than systematic load handling process.

VS



Main features:



48V power system has better energy consumption performance in comparison with traditional 24V system thanks to reduction of current and related losses for power transmission.



The power unit is located at the very bottom of stacker, which greatly improves stability of the truck thanks to keeping the gravity center as low as possible.



Patented mutual location of components: pump unit is placed under cylinder, which allows to achieve perfectly compact solution with improved oil flow from the oil tank to the cylinder without risks of cavitation phenomenon.



Manual lifting and lowering are always available regardless the level of battery charge, which make the loading/unloading always possible, even if the battery was not charged in time – ideal for occasional use, unplanned operations and as a back-up support in case your main equipment is temporary out of service.



The field of view is not overlapped by any objects in front of the operator and perfectly clear, you can always see full forks of stacker for precise positioning without necessity to make further adjustments and repositioning, which is a time saving factor in manual application.



Additional protection for the operator through foot protection on the steering rollers. Safe parking in any situation with mechanical parking brake.



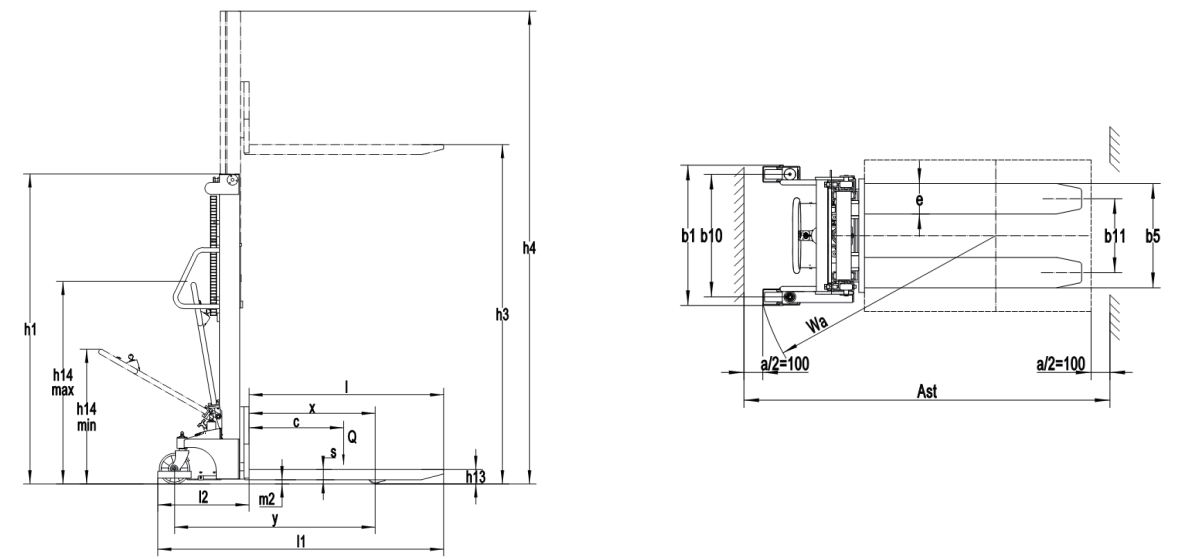
Relatively low self-weight in comparison with standard semi-electric stackers makes the maneuvering easier, without application of great physical efforts. Less than 50% of the traditional Semi-electric Stacker.



Simple and robust – easy in use and maintenance.

Perfect solution for applications where manual products are not welcomed due to application conditions or reduction of fatigue to personnel, but as well no necessity to use heavier, more expensive and complicated solutions.

Noblelift is always trying to support our customers with best solutions available regardless in which price category the product is offered. Get more benefits and save time enjoying great work simplification with the New ESFH model.



Type sheet for industrial truck acc. to VDI 2198

Type sheet for industrial truck acc. to VDI 2198				
Distinguishing mark				
1.2	Manufacturer's type designation		ESFH1016	ESFH1025
1.3	Power (battery ,diesel, petrol, gas, manual)			manua
1.4	Operator type			Pedestrian
1.5	Load capacity/Rated load	Q (t)		1.0
1.6	Load center distance	c (mm)		600
1.8	Load distance, the centre of drive axle to fork	x (mm)	703	745
1.9	Wheelbase	y (mm)		1185
Weight				
2.1	Service weight	kg	250	330
2.2	Axle loading, laden front/rear	kg	170/80	230/100
2.3	Axle loading, unladen front/rear	kg	350/900	370/960
Tires, chassis				
3.1	Tires			nylon / polyurethane
3.2	Tire size,front	Øxw (mm)		Ø 180×50
3.3	Tire size,rear	Øxw (mm)		Ø 74×70
3.4	Additional wheels(dimensions)	Øxw (mm)		Ø 180×50
3.5	Wheels,number front/rear(x=driven wheels)			2/2
3.6	Tread,front	b10 (mm)		648
3.7	Tread,rear	b11 (mm)		390(590)
Dimensions				
4.2	Lowered mast height	h1 (mm)	1973	3037
4.3	Free Lift height	h2 (mm)		/
4.4	Lift height	h3 (mm)	1600	2500
4.5	Extended mast height	h4 (mm)	1973	3037
4.9	Height of tiller in drive position min./max.	h14 (mm)		815/1195
4.15	Height, lowered	h13 (mm)		84
4.19	Overall length	l1 (mm)		1690
4.20	Length to face of forks	l2 (mm)		540
4.21	Overall width	b1 (mm)		740
4.22	Fork dimensions	s/e/l (mm)		60/160/1150
4.25	Width across forks	b5 (mm)		550
4.32	Ground clearance, centre of wheelbase	m2 (mm)		25
4.33	Aisle width for pallets 1000X1200 crossways	Ast (mm)		2160
4.34	Aisle width for pallets 800 x1200 lengthways	Ast (mm)		2130
4.35	Turning radius	Wa (mm)		1285
Performance data				
5.2	Lift speed,laden/unladen	m/s		0.058
5.3	Lowering speed,laden/unladen	m/s		/
5.10	Service brake			manua
Electric-engine				
6.2	Lift motor rating at S3 10%	kW		1.6
6.3	Battery acc. to DIN 43531/35/36A,B,C,norm			No
6.4	Battery voltage,nominal capacity K5	V / Ah		48V/20Ah
6.5	Battery Weight	kg		25