

We promise, We deliver

PSE10L-C
PSE15L-C
Walkie electric stacker

Noblelift Headquarters

Add:#528 Changzhou Road, Taihu
Sub-district, Changxing, 313100, China
TEL:+86 572 6210311/6120989
FAX:+86 572 6129336
WEB:www.noblelift.com
Email: info@noblelift.com



Official website



Our Wechat

Noblelift North America Corp.

Add:2461 S Wolf Road, Des Plaines, IL 60018
Tel:847-595-7100
Fax:847-595-7200
Email:sales@nobleliftna.com
Http: www.nobleliftna.com

Noblelift Europe GmbH

Add:Borsigstrasse 9d-93092 Barbing
Germany
TEL:+49 9401 607930
FAX:+49 9401 6079329
WEB:www.noblelifteuopr.com
Email: mail@noblelifteurope.com

Noblelift Russia

ООО "Ноблелифт Рус"
194292, Санкт-Петербург
Домостроительная ул. 4А офис 301
Бизнес-центр "Парнас"
тел.: +7 (800) 700-28-97
Email: sales@noblelift.com.ru



NEW Noblelift Products
ARRIVAL

NOBLELIFT INTELLIGENT EQUIPMENT CO., LTD

www.noblelift.com

PSE10L-C/PSE15L-C

Walkie electric stacker

PSE10L-C/PSE15L-C is an economic walkie electric stacker with rated capacity from 1000kg to 1500kg and lifting height from 1600 to 3600mm, which can meet most customers' requirements for goods stacking. The long-tiller design makes the operator comfortable and safer during operation.

ADVANTAGES

- High efficiency and energy saving, long service time.
- High power pump, high lifting efficiency.
- Compact and light design, easy operation.
- High stability, conform with safety standards.
- Strong channel mast provides the stacker with better stability and longer life.
- New appearance design, unified appearance of multiple specifications.

Long tiller design meets the requirements of ergonomics and safety

Long-tiller design ensures the operators' high efficiency and a safe distance from stacker. Compared with the short-tiller stacker, a long-tiller stacker uses less operating force. Besides, the safety distance and good view makes stacking operation more efficient and faster.



Maintenance-free lead-acid battery

Use maintenance-free lead-acid battery with deep discharge protection. (PSE10L-C 80Ah, PSE15L-C 100Ah)



Stability casters

Convenient stability casters adjustment, no need for lifting the stacker.



Strong channel steel provides the stacker with better stability and longer life.

Backrest (optional)

Optional high-quality backrest can make the goods more stable and safe when lifting the height.



Multi-function meter

The multi-function meter can display the vehicle working status, battery power and working time. Proven emergency buttons and electricity meters are more durable and reliable than other vehicles. The battery discharge indicator has a low-voltage automatic cut-off and lifting function to ensure a longer service life of the battery. PSE10L-C has a built-in 10A charger; PSE15L-C has a built-in 15A charger.



PSE10L-C



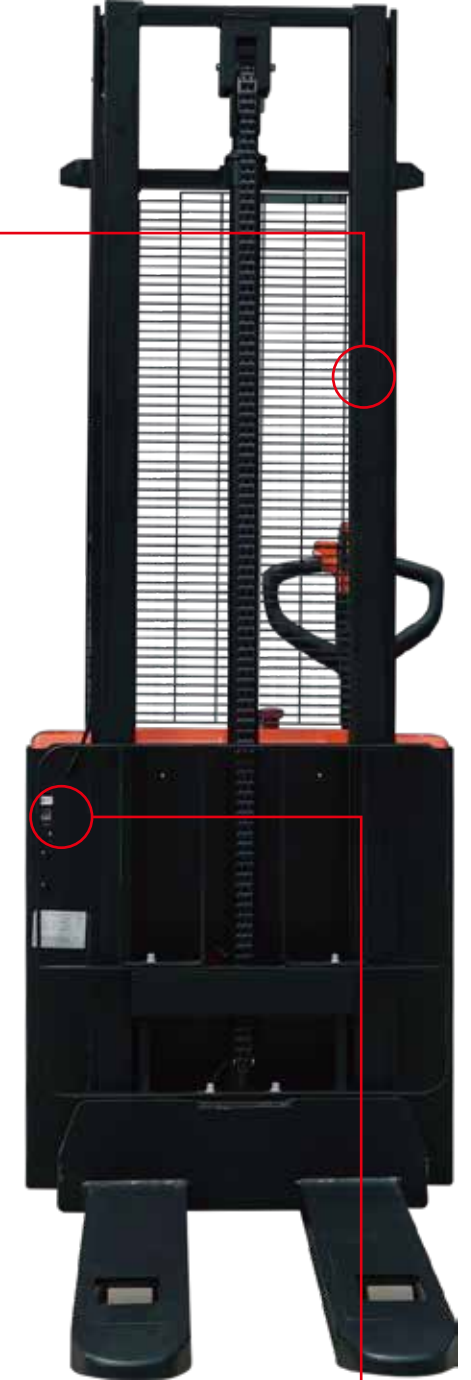
PSE15L-C

Controller

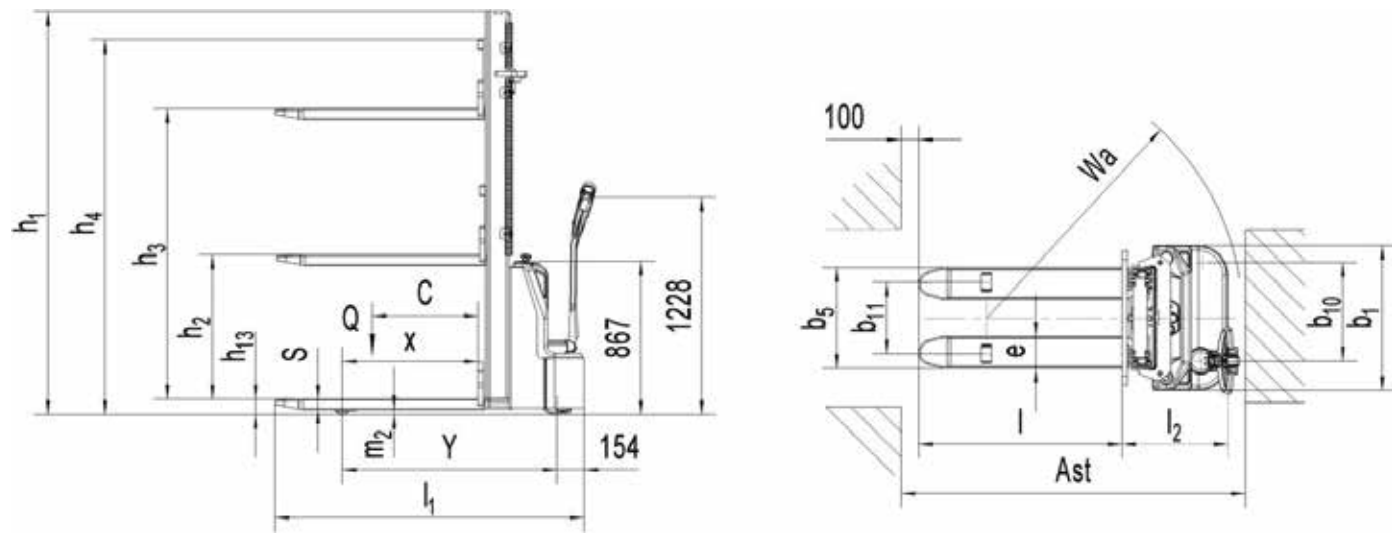
PSE10-C adopts CAN-bus communication technology, which simplifies the circuit and enhances the reliability of the whole vehicle. PSE15L-C adopts analog quantity control technology, which has the advantages of intuitiveness, easy investigation and easy troubleshooting.

Debug interface

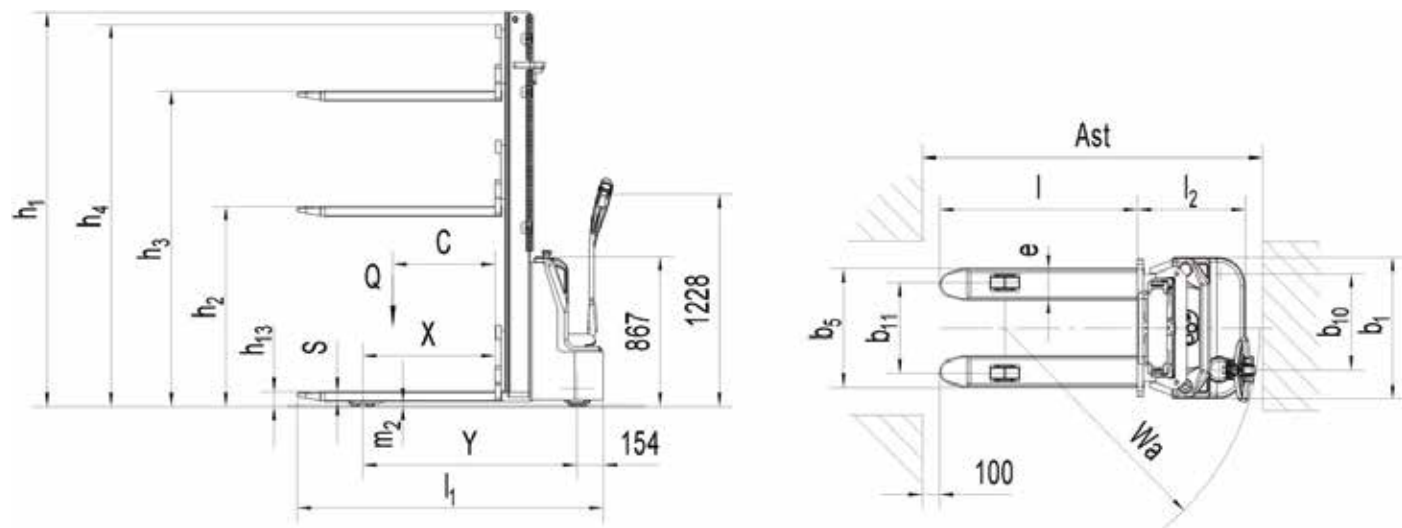
Lead out the car body through the debugging interface without removing the cover.



PSE10L-C



PSE15L-C



| PSL Model (PSE10L-C) | | | | | |
|----------------------|--------------------------------|-----------------------------|------------------------|---------------------------------|---------------------------------|
| Model | Lowered mast height h1 (mm) | Free lift height h2 (mm) | Lift height h3 (mm) | Extended mast height h4 (mm) | Lift+fork height h3+h13 (mm) |
| Single mast | 2057 | 1513 | 1513 | 2057 | 1600 |
| | 2257 | 1913 | 1913 | 2257 | 2000 |
| Double mast | 1982 | - | 2813 | 3389 | 2900 |
| | 2132 | - | 3113 | 3689 | 3200 |
| | 2282 | - | 3413 | 3989 | 3500 |

| PSL Model (PSE15L-C) | | | | | |
|----------------------|--------------------------------|-----------------------------|------------------------|---------------------------------|---------------------------------|
| Model | Lowered mast height h1 (mm) | Free lift height h2 (mm) | Lift height h3 (mm) | Extended mast height h4 (mm) | Lift+fork height h3+h13 (mm) |
| Single mast | 1980 | 1508 | 1513 | 1985 | 1600 |
| | 2380 | 1908 | 1913 | 2385 | 2000 |
| Double mast | 1932 | 78 | 2963 | 3339 | 2900 |
| | 2082 | 78 | 3113 | 3639 | 3200 |
| | 2282 | 78 | 3513 | 4039 | 3600 |

Type sheet for industrial truck acc. to VDI 2198

| Distinguishing mark | | PSL Model(PSE10L-C) | | PSL Model (PSE15L-C) | | |
|---------------------|---|---------------------|-------------------|----------------------|-------------------|------------|
| 1.2 | Manufacturer's type designation | 1600 | 3500 | 1600 | 3600 | |
| 1.3 | Drive | Battery | | Battery | | |
| 1.4 | Operator type | Pedestrian | | Pedestrian | | |
| 1.5 | Load capacity / rated load | Q (t) 1.0 | | 1.5 | | |
| 1.6 | Load center distance | c (mm) 600 | | 600 | | |
| 1.8 | Load distance ,centre of drive axle to fork | x (mm) 769 | | 770 | | |
| 1.9 | Wheelbase | y (mm) 1215 | | 1220 | 1245 | |
| Weight | | | | | | |
| 2.1 | Service weight | kg | 450 | 570 | 590 | 750 |
| 2.2 | Axle loading, laden front/rear | kg | 490 / 960 | 540 / 1030 | 640 / 1450 | 690 / 1560 |
| 2.3 | Axle loading, unladen front/ rear | kg | 330 / 120 | 415 / 155 | 410 / 180 | 525 / 225 |
| Tyres, Chassis | | | | | | |
| 3.1 | Tires | Polyurethane (PU) | | Polyurethane (PU) | | |
| 3.2 | Tire size, front | Øxw (mm) | Ø 220×70 | Ø 220×70 | | |
| 3.3 | Tire size, rear | Øxw (mm) | Ø 80×70 | Ø 80×70 | | |
| 3.4 | Additional wheels(dimensions) | Øxw (mm) | Ø 100×50 | Ø 100×50 | | |
| 3.5 | Wheels, number front/ rear(x=driven wheels) | | 1x+1/ 2 | 1x+1/ 2 | | |
| 3.6 | Tread, front | b10 (mm) | 557 | 557 | | |
| 3.7 | Tread, rear | b11 (mm) | 410 / 525 | 410 / 525 | | |
| Dimensions | | | | | | |
| 4.2 | Lowered mast height | h1 (mm) | 2057 | 2282 | 1980 | 2282 |
| 4.3 | Free Lift height | h2 (mm) | 1513 | - | 1508 | 78 |
| 4.4 | lift | h3 (mm) | 1513 | 3413 | 1513 | 3513 |
| 4.5 | Extended maximal height | h4 (mm) | 2057 | 3989 | 1985 | 4039 |
| 4.9 | Height of tiller in drive position min./max. | h14 (mm) | 670 /1228 | | 670 /1228 | |
| 4.15 | Height, lowered | h13 (mm) | 87 | | 87 | |
| 4.19 | Overall length | l1 (mm) | 1750 | | 1779 | |
| 4.20 | Length to face of forks | l2 (mm) | 600 | | 629 | |
| 4.21 | Overall width | b1 (mm) | 820 | | 820 | |
| 4.22 | Fork dimensions | s/e/l (mm) | 60 / 180 / 1150 | | 60 / 180 / 1150 | |
| 4.25 | Width across forks | b5 (mm) | 570 / 685 | | 570 / 685 | |
| 4.32 | Ground clearance, centre of wheelbase min./max. | m2 (mm) | 32 | | 27 | |
| 4.33 | Aisle width for pallets 1000x1200 crossways | Ast (mm) | 2293 | | 2324 | |
| 4.34 | Aisle width for pallets 800x1200 lengthwis | Ast (mm) | 2238 | | 2269 | |
| 4.35 | Turning radius | Wa (mm) | 1450 | | 1481 | |
| Performance data | | | | | | |
| 5.1 | Travel speed, laden/ unladen | km/h | 4.0/ 4.3 | | 4.0/ 4.4 | |
| 5.2 | Lift speed, laden/ unladen | m/s | 0.119 / 0.195 | | 0.087 / 0.148 | |
| 5.3 | Lowering speed, laden/ unladen | m/s | 0.166 / 0.159 | | 0.125 / 0.117 | |
| 5.8 | Max. gradeability, laden/ unladen | % | 5 / 10 | | 5 / 10 | |
| 5.10 | Service brake | | Electromagnetic | | Electromagnetic | |
| Electric- motor | | | | | | |
| 6.1 | Drive motor rating S2 60min | kW | 0.75 | | 0.75 | |
| 6.2 | Lift motor rating at S3 7.5% | kW | 2.2 | | 2.2 | |
| 6.3 | Battery acc. to DIN 43531/ 35/ 36 A, B, C, no | | No | | No | |
| 6.4 | Battery voltage, nominal capacity K5 | V / Ah | 2x12/80 | | 2x12/100 | |
| 6.5 | Battery weight | kg | 2x26 | | 2x34 | |
| 6.6 | Energy consumption acc. to VDI cycle | kWh/h | 0.44 | | 0.68 | |
| Addi- tional data | | | | | | |
| 8.1 | Type of drive control | | DC- Speed Control | | DC- Speed Control | |
| 8.4 | Sound level at driver's ear acc. to EN 12053 | dB(A) | <70 | | <70 | |