

ZOOMLION

NEW ZT58J

TELESCOPIC BOOM LIFT

CE Certified

FEATURES

Standard Features

- ▶ Horn
- ▶ Proportional control
- ▶ All motion alarm
- ▶ Flashing beacon
- ▶ Self-closing entry gate
- ▶ Emergency descent system
- ▶ Emergency stop button
- ▶ Auto-leveling system
- ▶ On-board diagnostic system
- ▶ Tilt protection system
- ▶ Load sensing system
- ▶ 4.3' Led display
- ▶ Swing-out engine tray
- ▶ Anemograph

Accessories & Options

- ▶ Platform work light
- ▶ Anti-collision device

HIGHLIGHTS

- ▶ Work height up to 58.8m and horizontal outreach up to 25.5m
- ▶ Industry's first polygonal innovative boom, boom weight reduced by more than 10%, vertical stiffness increased by 25%, torsion resistance increased by 20%, and offers small deformation and stable control

ACCESS WITH ZOOMLION GREEN

Phone: 0086(731)-88353680 0086(731)-88250971
E-mail: awm@zoomlion.com

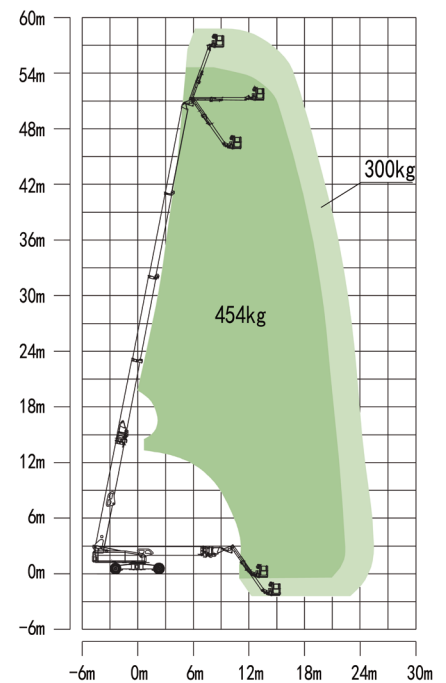
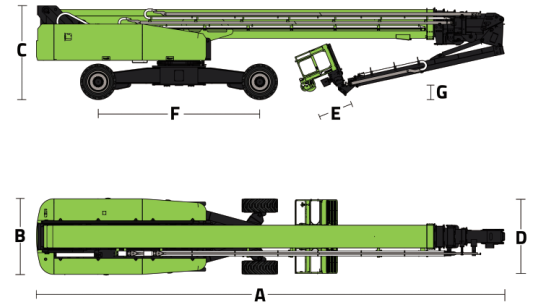
Add: ZOOMLION Wangcheng Industrial Park, Tengfei Road 997, Changsha, Hunan, China
Web: www.en.zoomlion.com

MAIN SPECS OF TELESCOPIC BOOM LIFT

ZT58J

Comply with CE Standard

Model	ZT58J	
	Metric	Imperial
Size		
Work Height	58.8m	192ft 11in
Platform Height	56.8m	186ft 4in
Horizontal Outreach	25.5m	83ft 8in
A - Stowed Length	14.4m	47ft 3in
B - Stowed Width	2.5m	8ft 2in
C - Stowed Height	3.06m	10ft
D - Platform Length	2.44m	8ft
E - Platform Width	0.91m	3ft
F - Wheelbase	5.357/4.69m	17ft 7in/15ft 5in
Tread	2.5/5.15m	8ft 2in/16ft 11in
G - Ground Clearance	0.40m	1ft 4in
Performance		
Platform Capacity (Unrestricted/Restricted)	300/454kg	660/1000lb
Drive Speed (Stowed)	4.5km/h	2.8mph
Gradeability	45%(24°)	
Turning Radius (Inside)	6.79/2.57m	22ft 3in/8ft 5in
Turning Radius (Outside)	8.43/6.39m	27ft 8in/20ft 12in
Turntable Swing	360° non-continuous	
Platform Rotation	±90°	
Tail Swing	2.25m	7ft 5in
Jib (Range of Articulation)	125°(-55°~70°)	
Max. Wind Speed	12.5m/s	28mph
Power		
Engine	Cummins QSF3.8	
Fuel Tank Capacity	200L	52.8gal
Control Voltage	12V DC	
Hydraulic Tank Capacity	400L	105gal
Drive Mode	4WD	
Steering Mode	Four wheels/Front wheel/Crab	
Tire		
Type	445/50 D710 Foam-filled Tires	
Weight		
Gross	29600kg	65256lb



Range of Motion ZT58J